

Hearing

THE CALL

Listening is an active process through which we interpret and respond to what we hear. It involves not just receiving information but seeking to understand it and then responding thoughtfully. Over the past year, the importance of listening has become even more pronounced. Amid the cacophony of our community and the wider world, with myriad demands on our attention, time, and resources, the truly significant can easily be overshadowed.

This year's theme, 'Listening', signifies both an achievement and an aspiration. It celebrates what we have managed to hear and comprehend, despite the noise, and reaffirms our commitment to listen even more attentively in the future. At St. Matthew's House, this is our pledge.

We invite you to listen, learn and grow with us!



Heeding THE CALL

Hearing the call is just the beginning; acting on it is the crucial next step. Listening well grants us knowledge, insight, and direction, but it is through action that we transform individual efforts into collective impact. This past year, we have engaged deeply in both listening and acting.

We reside on the side of hope, no matter where we are. We navigate this path with a mindset of justice and a heart full of charity, advocating for values and principles that inspire hope. By speaking of hope, we galvanize actions that ensure we invest locally.

Over the past year, we have truly heeded the call to action. Our impactful new programs and partnerships demonstrate our response to the needs we have heard. Initiatives like the Warming Bus, the Cathedral Café drop-in program, expanded street outreach, thriving childcare centres, and the groundbreaking of the 412 Barton residence—all exemplify our commitment to translating listening into meaningful action.

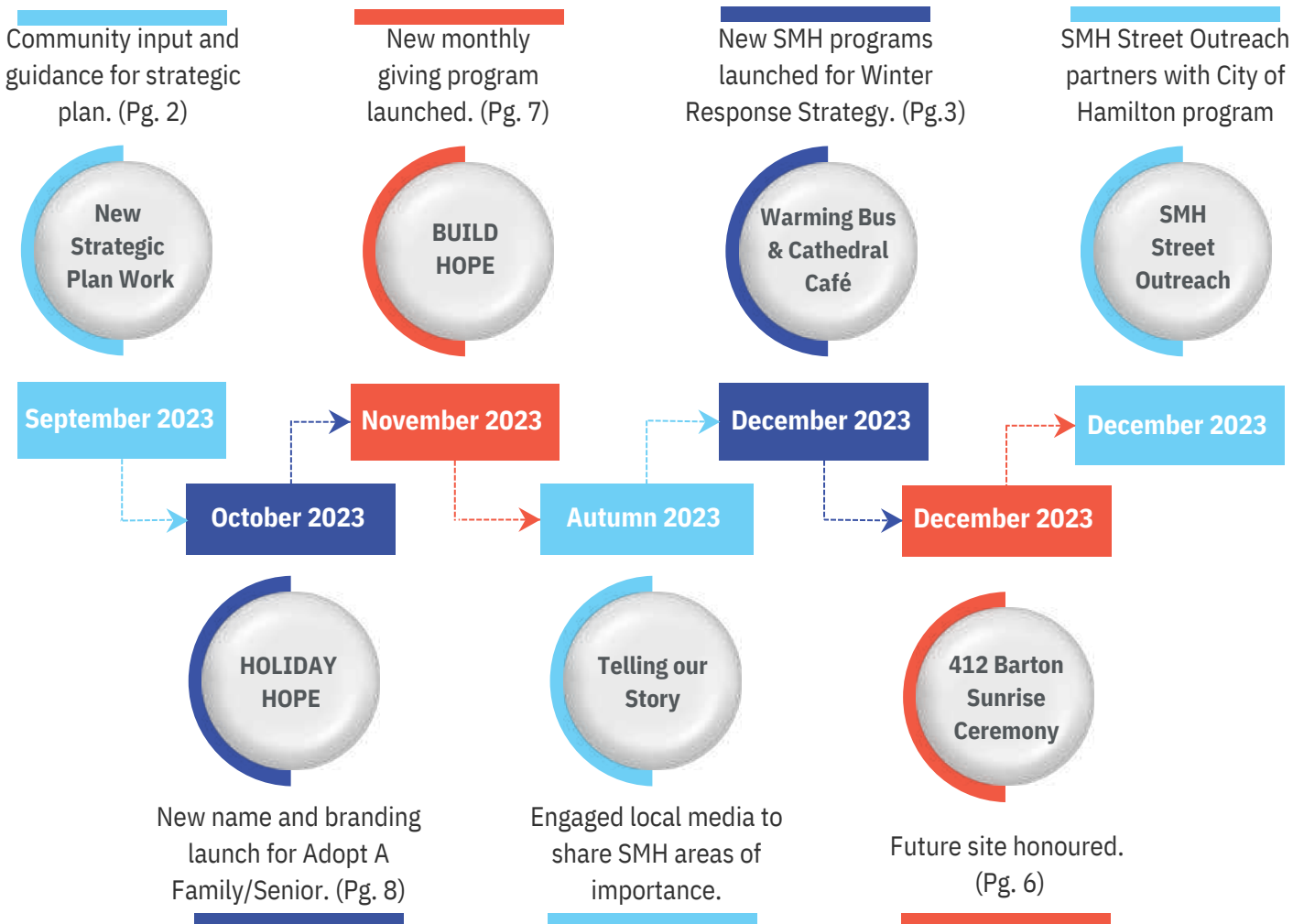
Thank you for being part of this journey.



Mary Burnett
Chair of the Board

Renée Wetselaar
Executive Director

Our Listening Journey...



A Listening Approach

STRATEGIC PLAN 2024 - 2029

The Board of Directors and Staff of St. Matthew's House have developed a Strategic Plan for 2024 – 2029 with broad input and guidance from our Strategic Planning Committee, which included representation from the Board, staff, and management. This Committee guided the environmental scan, community consultation, and final planning.



Four Areas Form the Basis of our Strategic Plan



Enhance and expand our community supports through new and existing partnerships.

Invest in the people of St. Matthew's House.



Elevate our fundraising efforts to better support our mission.

Focus community engagement on equity and justice outcomes.



This Strategic Plan reflects our understanding of what our community values most about St. Matthew's House and addresses the opportunities and challenges we face in providing high-quality support to individuals and families experiencing economic barriers.

Over the next five years, we will assess and deepen our approaches to our work, taking on a leadership role with an expanded group of community partners and actively engage more donors. St. Matthew's House is proud to use these strategies as our guiding lights.

Treasurer's Report Financial Overview



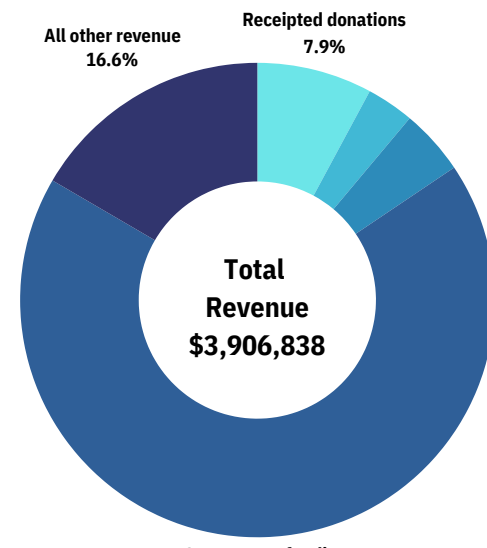
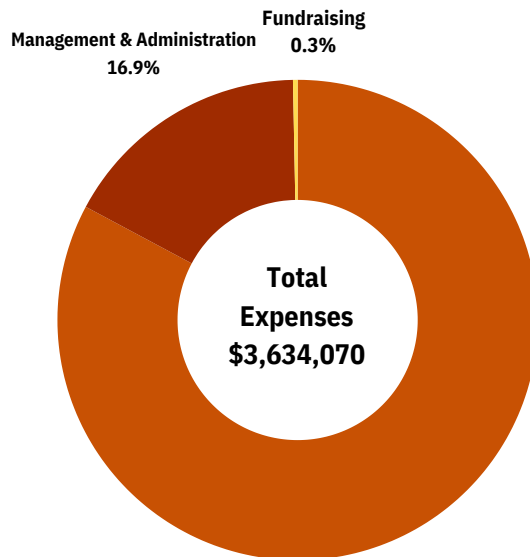
At St. Matthew's House, we strive to use the funds entrusted to us efficiently, ensuring we deliver the highest quality services and support to our community.

This year, our theme is Listening. We believe that listening to the needs of our community, the voices of those we support, and the insights of our donors and volunteers is paramount. Listening allows us to adapt, innovate, and provide services that truly meet the needs of those we serve.

Prudent financial stewardship has allowed the Board and Leadership Team to balance supporting the goals and dreams of the individuals we support with our financial responsibilities in these difficult times.

We thank our funders and donors for their continued support and confidence in St. Matthew's House. We know that things are hard and prices continue to rise; your support is more needed than ever and is very much appreciated. By listening to each other, we can continue to uplift our community.

Thank you for all your support.
Kudzie Chasosa, Treasurer



For more information, please contact us at www.stmatthewshouse.ca

Impact Stories

The Cathedral Café is a daytime welcome centre that launched December 1, 2023. The Cathedral Café is a collaborative partnership between St. Matthew's House (SMH) and Christ's Church Cathedral, with support from Hamilton Out of the Cold and featuring 541 Eatery & Exchange as an additional partner drop-in site. The project is funded by the City of Hamilton's winter response program.



"We know many of them by name and have a personal relationship with them. We invite them to our table and treat them like family."

*Dean Tim Dobbin,
Rector at Christ's Church Cathedral*

The hub at Cathedral Place, located at 252 James Street North, provided safe and supportive day time drop-in space for homeless individuals and those at risk of homelessness from Monday to Friday from 9 am to 4 pm. Guests were able to access seating, warmth, friendly welcoming faces, activities, programs and services, washrooms and food, with the main focus being to provide breakfast and lunch daily – along with the simple need for a place to be. In the first month of operation, the Cathedral Café had more than 2,210 visitations, or an average of 92 visitors throughout each day.



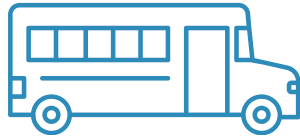
2,210

Visitors at the Cathedral Café in December 2023



2,584

Meals served at Cathedral Café in December 2023



600

Warming Bus visitors in December 2023



December 2023 saw a new bus in town. The Warming Bus offers a safe haven where riders can rest safely and peacefully and is a unique program SMH has developed in partnership with the City of Hamilton.

SMH staffs the Warming Bus that travels a regular route through the city each night from 10 pm to 6 am. The City of Hamilton provides the driver and bus, and St. Matthew's House provides trained staff people, energy bars and drinks. More than 600 riders received refuge in December 2023.



Impact Stories

Our Seniors Support Services and Street Outreach Team supports vulnerable seniors (55+) and unhoused individuals in Hamilton. By connecting them to tax assistance, food banks, housing support, and medical care, we address their diverse needs.

HOPES (Housing Outreach Preventing Evictions for Seniors) helps seniors maintain stable housing. Our unique anti-eviction program, in partnership with the Hamilton Community Legal Clinic, has prevented 95 evictions (between April-December 2023), preserving affordable housing units and curbing rent increases.

To combat food insecurity, we delivered nearly 2,731 [April to December 2023] boxes of groceries, each with five days' worth of fresh, nutritious food. Our year-round Mobile Fresh Food Market and SinKs (Seniors in Kitchens) programs ensure consistent access to healthy food for seniors.



These initiatives make a tangible difference in the lives of Hamilton's seniors.

Seniors Highlights



22

Safe housing interventions



2,731

Seniors in Kitchens (SinKs) visits



341

Connections made for vulnerable seniors
139 financial/202 food



Our Childcare Programs

We take great joy in creating spaces where families can feel secure, knowing their children are in a nurturing environment. Our goal is to foster a sense of well-being and belonging for all children, making our centres welcoming havens for the families we serve.

At St. Matthew's House Childcare Centre and St. Peter's @ St. Matthew's House Daycare, we work closely with families to offer more spaces and enhance our services.

Our ongoing efforts in Equity, Diversity, and Inclusion (EDI) and Truth and Reconciliation training are crucial for our community and centres. We strive to be as progressive as possible, ensuring that every child feels welcome and valued. Our dedicated and exceptional staff are at the heart of these efforts.

Childcare Program Highlights



223

Children Enrolled



780

Meals Served per child, per year



1,750

Educator Hours (FT) per educator, per year



From April to December 2023...

356 Inquiries about Seniors Intensive Case Management Services

95 Evictions prevented

139 Seniors who received income support (taxes, income sources, untangling CPP, etc.)

341 Successful connections made from referrals to our organization

Listening to our history

In celebration of the 412 Barton project, a Sunrise Ceremony was held to launch the project, honouring the site as it starts its new journey as homes for Black and Indigenous seniors facing homelessness.

It was important to recognize the land as originally belonging to Indigenous people, and that St. Matthew's House (founded by the Anglican ministry) is working on this project as an action of truth and reconciliation. It is also seen as an act of reconciliation and inclusion of the Black community in work of equity and justice together. In thanking the land for hosting a food bank for many years and serving thousands in the city who have faced hunger and poverty, St. Matthew's House honoured the land and people through words and rituals celebrating the future residents who will call 412 Barton home, with a smudging ceremony and African drumming. The event was held outside, in solidarity with future residents who are currently or close to being homeless.

Speakers from the Hamilton Regional Indian Centre, the Afro-Canadian Caribbean Association, the City of Hamilton, and building partners Assembly, New Commons and Jackman Construction shared excitement for the 412 Barton concept.

412
Barton
A PLACE TO THRIVE



Performer, artist and community champion Tom Wilson spoke of building community with love, understanding and awareness of each other's humanity, and of thinking and working ahead for seven generations ahead.



Learn more about 412 Barton by visiting stmatthewshouse.ca/412-barton/



BUILD Hope

JOIN OUR MONTHLY GIVING PROGRAM



Imagine the impact a steady and predictable source of income can have on seniors and others in need, when we are able to consistently connect them with the necessities of life such as food, housing, mental health services and financial security. This vision has led St. Matthew's House to introduce a new monthly giving program, **Build Hope**, to create an even greater impact within our community.

Monthly contributions give us the means to provide dependable, ongoing support to those we serve and is the key to helping us move beyond crisis management, band-aid solutions and short-term fixes.

Join us to Build Hope

Monthly contributions give us the means to provide dependable, ongoing support to those we serve.

Join as a monthly donor, today!

Visit us at

www.stmatthewshouse.ca/buildhope

Or, scan the QR code.



MAXIMIZE IMPACT



\$10/Month

Supplies a senior in need with 5 days of healthy and nutritious food through the Seniors' First Response Team Program.



\$20/Month

Provides a single parent with one child with a grocery gift card and gifts for the holiday season through the Holiday Hope program.



\$50/Month

Assists a senior with housing & cleaning supports to help prevent eviction through the HOPES (Housing Eviction Preventing Eviction for Seniors) program.



Holiday Hope

HELPING FAMILIES & SENIORS THRIVE THIS SEASON

One of our most popular programs matches low-income families and seniors with individual sponsors, families or groups looking for a meaningful way to give back to their community during the holiday season.



Formerly the Adopt A Family/Senior program, the newly-named Holiday Hope allowed sponsors to show hope, care and love to 2,271 families and seniors.



2,112

Total Individuals Supported



1,700

Children



430

Families



412

Seniors



17

Emergency Christmas Eve Appointments

#WhereHopesLives



In December 2023...

600 Warming Bus Visitors

978 Food/Drink items provided to visitors on the Warming Bus

165 Cold Weather Supplies handed out (gloves, hats, etc.)

17 Information/Referrals provided for other programs

2023 Staff List

Support Team

Renée Wetselaar
Executive Director

Elizabeth Cronk
Warming Centre Supervisor

Taniesha Gerrish
Manager, Children's Services

Andrew Matthews
Manager of Outreach & Seniors Programs

Alicia Payne
Donor Relations & Fundraising Lead

Madeleine Bond
Communications & Event Lead

Shani Doherty
HR & AP Coordinator

Enza Guddemi
Childcare Supervisor, SMCC

Kelly Nash
Financial Coordinator

Mark Ronan
Director of Finance

Kiana Brown
Senior Services Supervisor

Justin Drury
Operations Manager

Jenn Madden
Maintenance Support

Outreach & Seniors' Programs

HOPES Program

Rhonda Dunphy
Senior Support Navigator

Jessica Hood
Senior Support Navigator

Navigator

Nozwelo Maseko
HOPES System Navigator

Food Security Team

Ryan Forrester
Seniors First Response Team

Spencer Nosella
Seniors First Response Team

Paralegal

Sarah Casar-Hanes
Paralegal Support Worker

Outreach Team Workers

Brett Aston
Outreach Team

Megan Breznicar
Outreach Team

Ryan Brown
Outreach Team

Talice Doyle
Outreach Team

Noah Gadke
Outreach Team

Melissa Knowles
Outreach Team

Warming Centre/Warming Bus Workers

Sybille Herr
Warming Centre Cleaner

Christina Hurn
Warming Centre Worker

Sabahat Kazmi
Warming Bus Worker

Anna-Kay Lawman
Warming Bus Worker

Molly McCrone
Warming Centre Worker

Tara McCrone
Warming Centre Worker

Mouhamadou Oumarou Taffa
Warming Bus Worker

Michelle Semonovitch
Outreach Team

Paolina Tomarchio
Warming Centre Worker

Sheldon VanBarneveld
Warming Bus Worker

Child Care Programs

St. Matthew's Children's Centre

Oluwatoyin Adeneye, ECA
Cheryl Atkinson, ECA
Akassi Boa, RECE
Andrea Cowan, ECA
Brianna Doxtator, ECA
Abiola Faleyimu, ECE
Kisha Joseph, RECE
Kudjimoyo Kabongo, ECA
Azra Khan, ECE
Ivancica Kicic, ECE
Clara Muraca, ECE

Elodi Muyoboake, RECE
Vestine Niyitegeka, RECE
Karlee Northey, ECA
Hope Nwokebuani, Supply
Iwona Piasek, Cook
Bailey Rae-Ashton, RECE
Philomena Ramm, RECE
Navasha Richards-Nash, RECE
Samuel Saka, ECA
Tammy Williams, RECE

St. Matthew's at St. Peter's

Alana Baltzer, BASP
Karen Burson, Cook
Mary Cadete
School Age Program Leader
Paula Cercone, RECE
Deborah Chamutu
Acting Assistant Supervisor
Innocent Iro Kalu, BASP
Mitchell Johnson-Puska, BASP
Katherine Kastelik, RECE
Ainsley Lane, BASP

Nicole LeMee, RECE
Marita Linde, BASP
Lauren Macdonald, BASP
Gail Panasiuk, RECE
Heather Smith, BASP
Temitope Taiwo, BASP
Maria Thring, RECE
Kristy VanKeulen, ECA
Juan Xu, BASP

Community Committee Members

James Andrews
Angie Armstrong

Barb Busing
Tony Cupido

Michael Elliott
Dale Guenter

Ellen Morris
Glenna Swing

Steve Swing
John Watts

LAND AND AFRICAN ANCESTRAL ACKNOWLEDGEMENT

We would like to acknowledge that the land upon which we reside is the traditional ancestral territories of the Mississauga, Haudenosaunee and Anishanaabe nations, and within the lands protected by the "Dish with One Spoon" wampum agreement.

For many thousands of years, the first people sought to walk gently on this land. We seek a new relationship with the original peoples, one based in honour and deep respect. We acknowledge all our ancestors that have walked and stewarded these lands before us and those that continue to walk with us on this journey to a more harmonious world.

It is important to acknowledge the generations of people of African descent who were forcibly brought to this land and displaced around the world, as a result of the Trans-Atlantic Slave trade. In Canada, we have a history of slavery of Black and Indigenous people, and exploitation and internment of other groups. We are committed to continually acting in support of and in solidarity with all communities seeking freedom and reparative justice in light of the history and ongoing legacy of slavery that continues to impact communities in Canada.

We have gratitude for the opportunity to engage in and demonstrate leadership on reconciliation, in embracing diversity, and in helping everyone thrive, which is what we aim to do in St. Matthew's House through our programs and practices.



Thank you to our funders & partners

GOVERNMENT



FOUNDATIONS



PARTNERS



BENEFACTION



Photography in the 2023 Impact Report
graciously taken by Tim McKenna.

Looking Ahead...

Be part of the work that St. Matthew's House does to serve its community. Consider a donation to help St. Matthew's House foster resilience for our clients and our community – you can give to a general fund or select a specific program that you would like to support.

Online: www.stmatthewshouse.ca/donate

Mail: 414 Barton Street E. Hamilton, ON L8L 2Y3 905-523-5546

Phone: 905-523-5546

Email: admin@stmatthewshouse.ca

Charitable Registration No: 13030 4538 RR 0001



To stay up-to-date, follow us on social media:



SMHhamilton



SMH_Hamilton



SMH_Hamilton